

[illegible]



AstroNova® Product Identification

LEADING THE WAY IN DIGITAL LABEL & SPECIALTY PRINTING SOLUTIONS

AstroNova provides products, services and supplies that improve our customers' ability to identify, track and market their products.



QuickLabel®

Our QuickLabel® brand, pioneer in the on-site label printing industry, leads the field in tabletop label printers for on-demand color labels.

With decades of experience, QuickLabel provides the best solution for tabletop label printing systems. Our label printers, software, media, inks, toner and supplies are all designed to work cohesively. From vibrant product labels to BS5609-certified labels, we understand your labeling needs. Designed with ease-of-use in mind, our labeling solutions allow users to save time, gain flexibility and increase sales.

GetLabels®

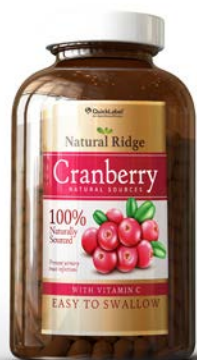
Our GetLabels® brand offers everything you need to print the most beautiful and durable labels for your products.

Engineered for lasting impressions, our labels are developed and tested by our in-house experts who work to ensure customers are printing the most durable, and high-quality labels fit for their application. Equipped with an on-site Materials Research Laboratory, GetLabels offers the widest range of label materials and adhesives compatible with all major printer brands.

TrojanLabel®

Our TrojanLabel® brand is the innovative leader in the professional label press and specialty printing industry for high volume color labels.

Since 2012, TrojanLabel has globally revolutionized color printing technology with the production of digital color label presses and specialty printing systems for a broad range of end markets. Designed with higher volume and professional applications in mind, TrojanLabel continues to develop innovative solutions and has become the obvious choice for label converters and commercial printers.



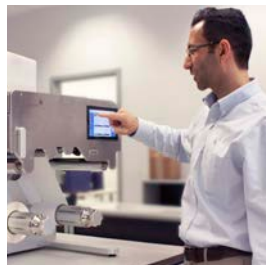
GLOBAL REACH

Total Solution Provider



Consultative Approach

Our worldwide Product Support Specialists are available to conduct virtual product demonstrations or to visit your facility for a one-on-one consultation. Your Product Support Specialist will review your specific needs and recommend the appropriate printing solution for your production environment. As part of a dedicated support team, each of our Product Support Specialists are trained to maintain extensive, up-to-date knowledge on all of our products and are always ready to answer any questions you may have through our around-the-clock remote and local support.



Innovative Products

Catering specifically to any business interested in printing their own labels such as end-users, commercial printers, OEM's and custom engineered solution, our QuickLabel division specializes in manufacturing all-in-one, compact digital label printing solutions. TrojanLabel specializes in higher volume and professional applications. Designed for professional quality, performance and total ease-of-use, AstroNova's complete printing solutions allow businesses to easily take label production in-house and maintain a low cost of ownership.

AstroNova provides complete in-house label printing solutions worldwide. Through our complete solution-based program comprised of four essential elements, making it effortless for businesses to take control of their labeling process and start printing labels.



User-friendly Software

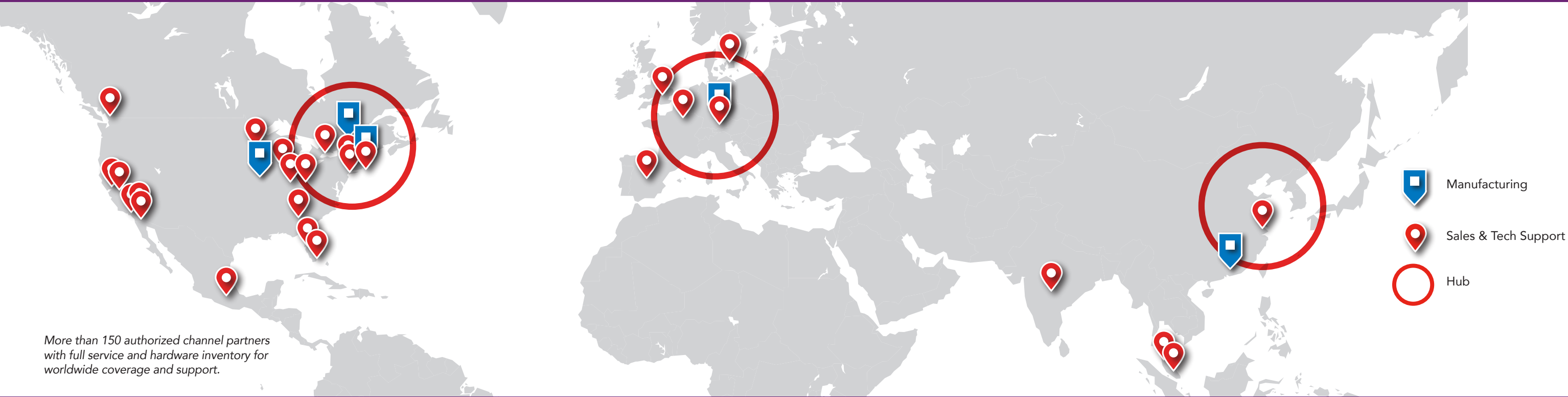
Each of our QuickLabel label printers comes fully equipped with our easy-to-use CQL Pro label and print management software. Designed to simplify label production, CQL Pro comes complete with Label Designer and Print Manager, allowing users to create and edit label designs, design printer profiles, and easily monitor or create print jobs across any label printer model.

While each of our TrojanLabel presses is equipped with TrojanControl touch screen software, which includes a cost calculator and job library, making it even easier to review operating costs, additionally, the TrojanControl display makes it effortless to place labels on pre-die cuts in perfect registration.



High-quality Materials

With 25+ years of experience, GetLabels offers the widest range of label materials and adhesives for your inkjet press, specifically manufactured for your customers' application requirements. Engineered in our own Materials Research Laboratory, our labels are suitable for a broad spectrum of applications; from glossy polypropylene for product display labels to textured matte for wine and artisan products. Our team of Media Specialists is always available for one-on-one media consultation and can provide label samples. upon request.



Digital Labeling Solutions

With decades of experience, AstroNova provides the best solution for those looking to start printing labels for your business.

Aiming to offer a total labeling solution, AstroNova provides a complete solution-based program, with all of our label printers, software, media, inks, and supplies designed to work cohesively. To ensure you always have *The Labels You Want When You Need Them®*, we deliver the tools you need to effortlessly begin printing professional labels in your facility and on-demand.



Inkjet Dye or Pigment

Digital Inkjet printing is the fastest growing technology in the printing world today. Advantages include ease-of-use, short turn-around time, on-demand printing, vibrant colors, and high-resolution photographic output quality.



Inkjet Press

Producing consistent, high-volumes in 24/7 production, Inkjet presses open new doors in the label printing industry. Ideal for adding high-resolution color inkjet labels to any portfolio.



Thermal Transfer

Valued for durability, print speed, and ability to print on a wide variety of substrate material, Thermal Transfer technology has been and continues to be a printing industry standard.



Electrophotographic Toner

Toner-based printing offers high-quality photographic output with reliable abrasion durability.

CQL^{PRO}

Advanced Labeling Software

CQL Pro is our advanced label design and print management software that allows users to easily design and print custom labels in-house. With a variety of new features and upgrades, CQL Pro provides users with an improved flexibility and intuitive design capabilities.



Label Designer

- Manage multiple labels and variations at the same time
- Access label files across all printer models
- Variable or dynamic data printing by linking to external databases
- Choose from a wide range of linear and 2D barcodes with live previews
- Effortless navigation through modern ribbon layout

Print Manager

- Quickly print multiple jobs with different designs and quantities without interruption
- Easily create print queues of different labels
- Automatically collate labels, choosing queue quantities as needed
- Preview entire print job to eliminate printing errors

TrojanControl Software

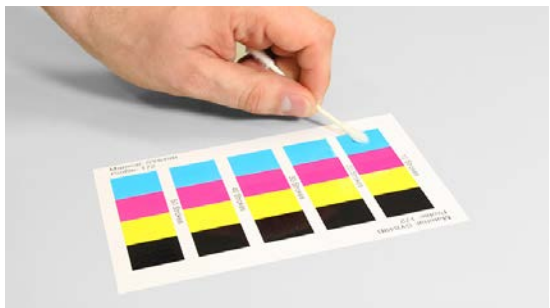
Intuitively designed, the TrojanControl interface allows operators to control print jobs from start to finish with the touch of a finger. It's state-of-the-art remote diagnostics function makes troubleshooting a breeze, easily resolving issues and eliminating delays. By effortlessly managing print queues through the day, placing labels on pre-die cuts in perfect registration and predicting cost per label, TrojanControl is able to provide operators with the opportunity to significantly reduce labor costs and total cost of ownership.



Materials Research Laboratory

Manufacturing Labels that Stand the Test of Time

At GetLabels, we take the integrity and quality of each of our materials seriously, and test every paper, synthetic label, film, tag, ink, and toner at our Materials Research Lab to measure adhesion strength and resistance to moisture, chemical solvents, abrasion and UV light ensuring we deliver a high-quality final product. From chemical-resistant barrel labels to eye-catching food labels, or narrow cosmetic labels, we're continually developing new materials for every application.



Benefits of Purchasing GetLabels® Label Materials:

- Reduced minimum order quantities and short lead times
- Extensive selection of standard or custom label materials
- Prequalified water-based inkjet label materials
- Continuous or pre die-cut rolls, standard or unique shapes
- ISO 9001-certified





Experts in Label Media Development

GetLabels understands the importance of customization. With our custom die-cut labels, you can quickly and easily brand your product. Choose your label size and shape from the growing library of options, or we'll happily create a custom label shape for you. We work with you to recommend the materials best suited for your product and are happy to source and test new raw materials to meet all your end use requirements. Contact one of our Media Specialists to schedule a free media consultation.



A Discount Program That Suits Your Business

GetLabels designed three (3) flexible programs to support your business needs and lower your label printer's cost per print.

In exchange for your commitment to purchase your printing supplies exclusively from us, we will grant you discounts on a variety of printing supplies from ink cartridges, ink tanks, toners, and label rolls to printheads, maintenance cartridges and a variety of service products. Such discounts can even be extended to spare parts depending on your yearly commitment.

You will receive expert and personalized assistance from your dedicated Media Specialist who will work with you at getting labels specifically designed for your application in just the right quantity, at the right price and on time.

Ink Cartridges
Thermal Transfer Ribbons
Ink Tanks
Toners
Label Rolls
Printheads
Maintenance Cartridges

3 flexible programs to support your business needs and lower your label printer's cost per print.

01



Media Requirements Contract (MRC)*

- Perfect for seasonal businesses and those who are new to printing their own labels
- Discounted Support Products & Printheads
- *No volume commitment*: Discounted labels, inks, toners, thermal transfer ribbons and printheads to thank you for using GetLabels printing supplies exclusively

*All programs are 12-months long and contingent upon the exclusive use of GetLabels label materials and/or thermal transfer ribbons in your QuickLabel or TrojanLabel printer. Printing supplies are not invoiced until shipped.

02



Blanket Order* With Scheduled Deliveries

- Discounted labels, inks, toners, thermal transfer ribbons and printheads to thank you for using GetLabels printing supplies exclusively
- Discounted Support Products & Spare Parts
- Possibility of safety stock in case of emergencies
- *Peace of mind*: Scheduled deliveries for the items you know you'll need
- Locked-in prices on eligible items

03



Blanket Order* You Can Release From, At Your Convenience

- Discounted labels, inks, toners, thermal transfer ribbons and printheads to thank you for using GetLabels printing supplies exclusively
- Discounted Support Products & Spare Parts
- Possibility of safety stock in case of emergencies or spikes in usage
- *Flexibility*: Email or call when you need items released from your Blanket Order
- Locked-in prices on eligible items

QL-E100

User-Friendly, Compact, Full-Color Tabletop Label Printer



The **QL-E100** is an easy-to-use, full-color tabletop label printer designed for smaller businesses, entrepreneurs, or production facilities where multiple on-demand label printers are beneficial. Compact, portable, and features a touchscreen interface, the **QL-E100** is simple to install and provides the flexibility to create, customize, and print professional-quality labels at home, in-office, in busier production environments, or on the go. Designed to make professional printing easy, the **QL-E100** is a perfect match for those in the market for an entry-level, high-performance printing solution.

- Features high-resolution dye-based digital inkjet technology
- Print from internal memory or via a USB memory stick
- Print Widths from 2.0" (51 mm) to 4.17" (106 mm)
- User-friendly touchscreen interface
- Standalone capabilities enable users to manage printer setup and operation without a computer

Technical Specifications

Operation

Print Technology	Thermal Inkjet
Print Resolution	Up to 1200 dpi
Label Size/Print Area	Width: 2.0" (51 mm) - 4.17" (106 mm) Length: 1.0" (25.4 mm) - 10.0" (254 mm)
Media Sensors	Gap, Reflective (black mark), Continuous
Cutter	Automatic, cut at end of batch or between labels, 1.0" (25mm) minimum cut length Rated for 300,000 cuts on paper liner
User Interface	7.0" (178mm), 1280 x 600, Touchscreen LCD Display 4 buttons – Power, F1, F2, F3
Connectivity	(1) USB-C 2.0 PC communication interface (2) USB-A 2.0 ports for connection of external approved devices
Software	Microsoft Windows® 11, 10, 8.1; 64/32-bit Drivers CQL Pro advanced label creation and print management software (one free license included)
Color Matching	ICC Color profiles for all QuickLabel-supplied Inkjet Receptive Media

Supplies

Ink Cartridges	QuickLabel QL-E100 Single High Capacity CMY Color Ink Cartridge, process black
Labels	QuickLabel Matte, Semi-Gloss and High Gloss Papers & Synthetics with a variety of adhesives to choose from

Media

Width	2.125" (54 mm) - 4.25" (108 mm)
Thickness	3.2 - 11.4 mil (0.08 mm - 0.29 mm)
Roll Size	5.9" OD (150 mm), 3" ID (76 mm) core



Environmental & Physical

Printer Operating	59° F to 86° F (15° C to 30° C), 20% to 80% Relative Humidity (non-condensing)
Power Requirements	Input: 100 - 240 VAC 50/60Hz Output: 24V / 2.5A 60W
Dimensions	9.88" L x 10.25" W x 11.50" H (251 mm x 260 mm x 292 mm)
Weight	11.3 lbs. (5.1 Kg) 20 lbs. (9.1 Kg) shipping

Warranty

One-Year Manufacturer's Parts & Labor Warranty on Printer
2 years shelf-life from date of production on unused/unopened Ink Cartridges

What's Included

QuickLabel Systems QL-E100 printer, AC power cord, USB-C to USB-A Cable, QL-E100 CMY dye ink cartridge, Installation Guide
CQL Pro® advanced label creation and print management software (one free license included)
Manufacturer-Direct Sales, Warranty and Service
Web and E-mail Technical Support

GetLabels® QL-E100 Stock Labels

Type #	Material	Label Size	AstroNova Part Number	Labels per Roll
163	Satin PP	2" x 2"	V39207294	1350
		3" x 2"	V39207295	1350
		3" x 4"	V39207296	700
165	Gloss BOPP	2" x 1"	V39207291	2550
		3" x 4"	V39207292	700
		4" x 6"	V39207293	460
194	Gloss Paper	2" x 1"	V39207260	2550
		2" Circle	V39207262	1275
		2" x 6"	V39207264	460
		3" x 2"	V39207265	1350
		3" x 4"	V39207268	675
		4" x 2"	V39207269	1350
		4" x 4"	V39207270	675
		4" x 6"	V39207271	460
		2" x 1"	V39207178	2190
242	Matte Paper	3" x 2"	V39207181	1150
		3" x 3"	V39207200	780
		4" x 3"	V39207253	780
258	Matte BOPP	4" x 6"	V39207254	400
		2" x 2"	V39207255	1275
		3" x 2.5"	V39207256	1025
		4" x 3"	V39207257	875
		4" x 4"	V39207258	660
285	Gloss BOPP	4" x 6"	V39207259	440
		2" x 1.5"	V39207272	1800
		3" x 2.5"	V39207284	1125
		4" x 1.5"	V39207289	1800
		4" x 3"	V39207288	950
		4" x 6"	V39207290	480

QL-120X

Professional Tabletop Digital Label Printer

Best in Class Two-Year Warranty



eXtended Two-Year Warranty
An industry first, two-year warranty provides the ultimate peace of mind.



The **QL-120X** establishes a new standard in color labeling, offering industry’s best eXtended two-year warranty, eXtended printhead life, and eXtended lifetime benefits.

The **QL-120X** features an industry-best two-year warranty giving the assurance and reliability needed to produce color labels, and offers a low total cost of ownership with its high-capacity ink cartridges and lower cost, more efficient dye-based ink, ultimately delivering up to 35% savings (image dependent) than competing pigment ink-based technologies. Featuring a native 1200 x 1200 dpi, eXtended life printhead matched with QuickLabel’s proprietary dye ink formulation; the **QL-120X** is ready to deliver true-to-life color images unmatched by any other digital labeling system in its class.

- **Fast print speed up to 12" per second (60 ft per minute)**
- **Superior print resolution up to 1200 dpi**
- **Print width up to 4.2"**
- **Industry best performance**
- **Excellent reliability**

Technical Specifications

Operation

Ink Type	Dye ink, (4) individual CMYK cartridges
Print Resolution	1200 x 1200 dpi / 1200 x 600 dpi
Print Speed	2 ips (50 mm/sec) - 12 ips (305 mm/sec)
Print Area*	Width: 0.5" (12.7 mm) - 4.17" max (105.9 mm) Length: 0.24" (6 mm) - 30" (762 mm)
Media Sensors	Gap, Reflective (black mark), Continuous
Cutter	Automatic, guillotine-type, cut at end of batch or between labels, 1.0" (25 mm) minimum cut length Rated for 1.5M cuts on 1.8 mil, 65g/m2 paper liner
Connectivity	High-speed USB 2.0; Gigabit ethernet RS-232 external control interface and protocol
Software	Microsoft Windows® 10, 8.1, 8, 7; Windows Server® 2019, 2016, 2012, 2008, 64/32-bit drivers, CQL Pro advanced label creation and print management software (one free license included), Nicelabel® enterprise or desktop software (optional)

Environmental & Physical

Printer Operating	59° F to 86° F (15° C to 30° C), 10% to 90% Relative Humidity (non-condensing)
Power Requirements	100 - 240 VAC 50/60Hz, 1.5A/0.5A
Power Consumption	268W (max)
Noise Level	Less than 60dB while printing, less than 40dB during standby (ISO7779)
Dimensions	15.2" L x 22.2" W x 15.5" H (286 mm x 564 mm x 394 mm)
Weight	52.9 lbs. (24 kg) without supplies 56.1 lbs. (26 kg) with supplies 68.2 lbs. (31 kg) shipping
Optional Accessories	RW-5.1 Automatic Label Roll Rewinder, 11.8" (300 mm) OD Roll UW-5.1 Automatic Label Roll Unwinder, 11.8" (300 mm) OD Roll External Control Interface



* Consult with our media sales specialists for label widths narrower than 0.75" (19 mm)
** Construction = print width + edge trim

Supplies

Ink Cartridges	QL-120X CMYK dye cartridges, 240 mL, (230 mL usable)
Maintenance Cartridge	450 mL full replacement; 360 mL (80%) near full warning

Labels and Tags

Construction**	Width: 1.0" (25.4 mm) - 4.53" (115 mm) Length: 0.24" (6 mm) - 30" (762 mm)
Thickness	5.7 mil (0.145 mm) – 10 mil (0.255 mm)
Roll Size	8" OD (200 mm), 3" ID (76 mm) core 11.8" OD (300 mm) with optional UW-5.1 External Unwind
Types	Matte, semi-gloss, high gloss papers, and synthetics as well as tag stocks and other specialty labels

Warranty

Two-Year AstroNova Product Identification Standard Limited Warranty (excludes wear parts and supplies)

QL-120Xe

Cost-Effective Tabletop Digital Label Printer

Full-Featured Performance, Entry-Level Price



Low initial capital expenditure allows small businesses with lower volumes to take advantage of the power and performance of the QL-120Xe with a competitive total cost of ownership.

The **QL-120Xe** is a cost-effective, in-house color labeling solution that delivers the same performance and reliability as the **QL-120X**, but with entry-level price allowing small businesses and startups to achieve attractive and compelling branding for their products.

Ideal for quantities of 2,000 to 15,000 labels per week, the **QL-120Xe** provides an economical way to start producing custom color labels today with potential savings for months or years to come.

Featuring a native 1200 x 1200 dpi, eXtended life printhead matched with QuickLabel’s proprietary dye ink formulation, the **QL-120Xe** is ready to deliver true-to-life color images unmatched by any other digital labeling system in its class.

- **Full-featured performance, small-business friendly price**
- **Vibrant color labels with exceptional 1200 dpi print resolution**
- **Ideal for low volumes or print coverage**
- **Print widths from 0.5" to 4.2"**
- **Excellent reliability, world-class support**

Technical Specifications

Operation

Ink Type	Dye ink, (4) individual CMYK cartridges
Print Resolution	1200 x 1200 dpi / 1200 x 600 dpi
Print Speed	2 ips (50 mm/sec) - 12 ips (305 mm/sec)
Print Area*	Width: 0.5" (12.7 mm) - 4.17" max (105.9 mm) Length: 0.24" (6 mm) - 30" (762 mm)
Media Sensors	Gap, Reflective (black mark), Continuous
Cutter	Automatic, guillotine-type, cut at end of batch or between labels, 1.0" (25 mm) minimum cut length Rated for 1.5M cuts on 1.8 mil, 65g/m2 paper liner
Connectivity	High-speed USB 2.0; Gigabit ethernet RS-232 external control interface and protocol
Software	Microsoft Windows® 10, 8.1, 8, 7; Windows Server® 2019, 2016, 2012, 2008, 64/32-bit drivers, QCL Pro advanced label creation and print management software (one free license included), Nicelabel® enterprise or desktop software (optional)

Environmental & Physical

Printer Operating	59° F to 86° F (15° C to 30° C), 10% to 90% Relative Humidity (non-condensing)
Power Requirements	100 - 240 VAC 50/60Hz, 1.5A/0.5A
Power Consumption	268W (max)
Noise Level	Less than 60dB while printing, less than 40dB during standby (ISO7779)
Dimensions	15.2" L x 22.2" W x 15.5" H (286 mm x 564 mm x 394 mm)
Weight	52.9 lbs. (24 kg) without supplies 56.1 lbs. (26 kg) with supplies 68.2 lbs. (31 kg) shipping
Optional Accessories	RW-5.1 Automatic Label Roll Rewinder, 11.8" (300 mm) OD Roll UW-5.1 Automatic Label Roll Unwinder, 11.8" (300 mm) OD Roll External Control Interface

* Consult with our media sales specialists for label widths narrower than 0.75" (19mm)

** Construction = print width + edge trim

Supplies

Ink Cartridges	QL-120Xe CMYK dye cartridges, 240 mL, (230 mL usable)
Maintenance Cartridge	450 mL full replacement; 360 mL (80%) near full warning

Labels and Tags

Construction**	Width: 1.0" (25.4 mm) - 4.53" (115 mm) Length: 0.24" (6 mm) - 30" (762 mm)
Thickness	5.7 mil (0.145 mm) – 10 mil (0.255 mm)
Roll Size	8" OD (200 mm), 3" ID (76 mm) core 11.8" OD (300 mm) with optional UW-5.1 External Unwind
Types	Matte, semi-gloss, high gloss papers, and synthetics as well as tag stocks and other specialty labels

Warranty

One-Year Astronova Product Identification Standard Limited Warranty (excludes wear parts and supplies)



QL-120D

Durable Tabletop Digital Label Printer



The **QL-120D** is designed to print exceptionally durable labels with its high-performance pigment inks that can withstand water, abrasion, UV or sunlight exposure and harsh chemicals. The **QL-120D** produces BS5609 certified labels, GHS hazard warning labels, horticultural labels/tags or medical/pharma labels that can withstand sterilization and cryogenic freezing.

- **Exceptionally durable labels, withstanding the harshest applications**
- **Fast print speed up to 12" per second (60 ft. per minute)**
- **Print resolution up to 1200 dpi**
- **Print width 0.5" to 4.2"**
- **Economical running cost**
- **Excellent reliability**

Technical Specifications

Operation

Ink Type	Pigment ink, (4) individual CMYK cartridges
Print Resolution	1200 x 1200 dpi / 1200 x 600 dpi
Print Speed	12 ips (300 mm/sec) @ 1200 x 600dpi 6 ips (150 mm/sec) @ 1200 x 1200 dpi / 600 x 600 dpi
Print Area	Width: 0.5" (12 mm)* - 4.17" max (105.9 mm) Length: 0.24" (6 mm) - 30.0" (762 mm)
Media Sensors	Gap, Reflective (black mark), Continuous
Cutter	Automatic, guillotine-type, cut at end of batch or between labels, 1.0" (25mm) minimum cut length Rated for 1.5M cuts on 1.8mil, 65g/m ² paper liner
Connectivity	High-Speed USB 2.0; Gigabit Ethernet RS-232 External Control Interface & Protocol
Software	Microsoft Windows® 10, 8.1, 8, 7; Windows Server® 2019, 2016, 2012, 2008, 64/32-bit Drivers CQL Pro advanced label creation and print management software (one free license included) Nicelabel® Enterprise or Desktop software (optional)

Environmental & Physical

Printer Operating	59° F to 86° F (15° C to 30° C), 10% to 90% Relative Humidity (non-condensing)
Printer Storage	32° F to 95° F (0° C to 35° C), 5% to 95% Relative Humidity (non-condensing)
Ink Storage	32° F to 95° F (0° C to 35° C), 35% to 85% Relative Humidity (non-condensing)
Noise Level	Less than 60dB while printing, less than 40dB during standby (ISO7779)
Power Requirements	100 - 240 VAC 50/60Hz, 1.5A/0.5A
Power Consumption	268W (max)
Dimensions	15.2" L x 22.2" W x 15.5" H (386 mm x 564 mm x 394 mm)
Weight	52.9 lbs. (24 Kg) without supplies 56.1 lbs. (26 Kg) with supplies 68.2 lbs. (31 Kg) shipping
Optional Accessories	RW-5.1 Automatic Label Roll Rewinder, 11.8" (300 mm) OD Roll UW-5.1 Automatic Label Roll Unwinder, 11.8" (300 mm) OD Roll External Control Interface

Supplies

Ink Cartridges	QL-120D CMYK pigment cartridges, 240mL (230 mL usable)
Maintenance Cartridge	450 mL full replacement; 360mL (80%) near full warning

Labels and Tags

Construction**	Width 1.0" (25.4 mm) - 4.53" (115 mm) Length 0.24" (6 mm) - 30.0" (762 mm)
Thickness	5.7 - 10 mil (0.145 mm - 0.255 mm)
Roll Size	8" OD (200 mm), on 3" ID (76 mm) core 11.8" OD (300 mm) with optional UW 5.1 External Unwind
Types	Matte, semi-gloss, high gloss papers, and synthetics as well as tag stocks and other specialty labels

Warranties

One-Year Astronova Product Identification Standard Limited Warranty (excludes wear parts and supplies)



* Consult with our media sales specialists for label widths narrower than 0.75" (19 mm)
** Construction = print width + edge trim

QL-300

5 color CMYK+White Toner-Based Label Printer



Designed for label printing, the **QL-300** is the world's first 5-color (CMYK+White) toner-based tabletop label printer. The addition of white to traditional CMYK printing, delivers exceptionally sharp, crisp, clear, and vibrant color labels, expanding creative opportunities, and creating impactful branding that drives product sales. Users can print on a wide variety of label materials from economical to premium, including transparent, black, Kraft paper, metallic silver, gold-colored, and more. Also available as a 4-color CMYK model upon request.

Delivering premium 1200 x 1200 dpi 5-color labels with unmatched durability, water-fastness, and UV-resistance, the **QL-300** enables brand owners to achieve an efficient workflow from short to mid-size runs. Label widths range from 1.0" to 5.0" and offer roll-to-cut or roll-to-roll operation. The **QL-300** also includes a license to CQL Pro advanced labeling software.

- **Print speed up to 6 inches per second (30 ft per minute)**
- **Exceptional print resolution up to 1200 dpi**
- **Label Width: up to 5" (127mm)**
- **High resolution output with low toner consumption**
- **Produce rugged labels that withstand abrasion, moisture and UV exposure**



NATURAL GRASS PAPER

Technical Specifications

Operation	
Print Technology	Electrophotographic, Toner
Ink Type	Toner, (4 or 5) individual CMYK or W cartridges
Print Resolution	1200 x 1200 dpi / 600 x 600 dpi
Print Speed	6 ips (152 mm/sec), 4 ips (102 mm/sec) or 2.3 ips (58 mm/sec)
Label Size	Width: 1.0" (25.4 mm) – 5.0" max (127 mm) Length: 0.5" (12.7 mm) – 52.0" (1320.8 mm)
Print Position Accuracy	±1 mm
Cutter	Automatic, 4.0" (102 mm) minimum cut length
Control Panel	Display: Color LCD 480 x 272 pixel Keypad: Power, Online, Cancel, Help, Power Save, Menu (Up, Down, OK, Back), Numeric Keypad, Feed, Unload LED Indicators: Power, Online, Help, Power Save, Attention
Connectivity	High-Speed USB 2.0; Gigabit Ethernet
Software	Windows® 11/10/8.1, Server 2019/2016/2012 (32 & 64-bit) Drivers PCL and PostScript drivers CQL Pro advanced label creation and print management software (one free license included)
Barcodes	All major barcodes supported, including 2D Datamatrix and QR Code

Environment & Physical

Printer Operating	50° F to 86° F (10° C to 30° C), 20% to 70% Relative Humidity (non-condensing)
Printer Storage	14° F to 109° F (-10° C to 43° C), 10% to 90% Relative Humidity (non-condensing)
Power Requirements	110 – 127 VAC 60Hz 220 – 240 VAC 50Hz
Power Consumption	Operating: 710W (average) Peak: 1,200W Idle, Powered On: 27W Power Save: 25W
Dimensions	40.9" L x 18.8" W x 17.4" H (1040 mm x 477 mm x 441 mm)
Weight	136 lbs. (62 Kg) with supplies

Supplies	
Toner Cartridges	QL-300 CMYKW toner cartridges, with integral image drum
Additional Supplies	Transfer Belt, Transfer Roller, Waste Toner Box, Fuser

Media Dimensions	
Width	Width: 1.0" (25.4 mm) – 5.12" max (130 mm) in continuous mode
Length	Length: 0.5" (12.7 mm) – 52.0" (1320.8 mm)
Thickness	3.0 - 9.8 mil (0.076 mm – 0.25 mm)
Roll Size	8.0" OD (203 mm), 3" ID (76 mm) core
Types	GetLabels Approved Paper, Synthetic label and tag stock

Warranty
One-Year Manufacturer's Parts & Labor Warranty on printer (excludes printing supplies)



GOLD METALLIC

NATURAL BROWN "KRAFT"

GLOSS CRYSTAL CLEAR POLYESTER

BLACK VELLUM

QL-900

Print with Confidence

Experience Unmatched Productivity with this Versatile Label Printer



Featuring a flat, easily accessible media path, the **QL-900** boasts superior inkjet performance, producing crisp, clean results. The adjustable media sensor allows printing on various label shapes. With a bright, easy-to-use 7" touchscreen display for seamless printer operation and monitoring, 1600 dpi, and full-color printing, the **QL-900** is versatile and delivers superior results job after job.

- **Operator friendly 7" Touchscreen Display**
- **Sharp print resolution up to 1600 dpi**
- **Print Width up to 8.5"**
- **High productivity label printer**

Technical Specifications

Operation	
Print Technology	Thermal Inkjet
Ink Type	High-Performance Dye ink, (5) individual CMYKK Cartridges
Print Resolution	1600 dpi x 1600 dpi / 1600 x 800 dpi
Print Speed	6 ips (152 mm/sec) @ 1600 x 1600 dpi 12 ips (305 mm/sec) @ 1600 x 800 dpi*
Label Size/Print Area	Width: 2.0" (50.8 mm) - 8.6" (220.8 mm) Length: 2.5" (63.5 mm) - 75" (1904 mm)
Media Sensors	Gap, Reflective (bottom-only), Continuous
Cutter	Approximately 400,000 cuts on paper liner
User Interface	7" Touchscreen Display, Power Button/LED
Connectivity	USB 2.0; 10/100 BaseT Ethernet, RJ-45 connection
Software	Microsoft Windows® 11, 10, 64/32-bit Driver CQL Pro® advanced label creation and print management software (one free license included)
Color Matching	ICC Color profile support for qualified media
Supplies	
Ink Cartridges	QuickLabel QL-900 CMYKK cartridges, 250mL each
Wiper Module	Approximately 10,000 wipes
Media	
Width	2.125" (54 mm) - 9.0" (228.6 mm)
Length	Length: 2.5" (63.5 mm) - 75" (1904 mm)
Thickness	3.9 - 11.8 mil (0.1 mm - 0.3 mm)
Roll Size	10" OD (254 mm), 3" ID (76 mm) core

Environmental & Physical

Printer Operating	59° F to 95° F (15° C to 35° C), 30% to 90% Relative Humidity (non-condensing)
Printer Storage	23° F to 113° F (-5° C to 50° C), 30% to 90% Relative Humidity (non-condensing)
Ink Storage	32° F to 95° F (0° C to 35° C), 35% to 85% Relative Humidity (non-condensing)
Atmospheric Pressure	1060hPa (795mmHg) - 700hPa (525mmHg)
Power Requirements	100 - 240 VAC 50/60Hz, 2.5A
Power Consumption	Operating: 60W (max) Idle: 30W (max)
Dimensions	Print Unit (only): 22.5" L x 20.3" W x 13.5" H (514 mm x 565 mm x 343 mm) With HP Unwind: 35.75" L x 23.75" W x 14.25" H (908 mm x 603 mm x 362 mm) With HP Unwind & Rewind: 52.5" L x 23.75" W x 14.25" H (1334 mm x 603 mm x 362 mm)
Weight	Print Unit (only): 75 lbs. (34 Kg) High Performance Unwind: 19 lbs. (8.6 Kg) High Performance Rewind: 20 lbs. (9.1 Kg)
Optional Accessories	RW-900-STD Standard Label Rewinder 10" (254 mm) OD Roll, 6 ips only UW-900-STD Standard Label Unwinder 10" (254 mm) OD Roll, 6 ips only (required for roll printing operation) RW-900-HP High Performance Label Rewinder 10" (254 mm) OD Roll, 6 ips or 12 ips* UW-900-HP High Performance Label Unwinder 10" (254 mm) OD Roll, 6 ips or 12 ips* (required for roll printing operation)

Warranty

One-Year Manufacturer's Parts & Labor Warranty (excludes wear parts and supplies)

What's Included

QuickLabel QL-900 printer, AC power cord, USB Cable, Installation Guide, CQL Pro® advanced label creation and print management software (one free license included)

Manufacturer-Direct Sales. Warranty and Service | Unlimited Telephone Web and E-mail Technical Support

Optional Remote and On-Site Setup & Training, Extended Warranty Support and QuickSwap™ programs available

QL-30 QL-60

One-Color Thermal Transfer Printers



Compact, monochrome high-speed thermal transfer printers that are designed with ease of use in mind. The **QL-30M** at 300 dpi and the **QL-60M** at 600 dpi are both high-quality printers that offer high print speeds of up to 11.8 inches per second. Perfect for barcode label printing, or for printing one-color labels that are exposed to extreme conditions for long periods. Both printers can be operated in stand-alone mode, in a PC application or a network.

These printers are an ideal solution for producing labels for hazardous substances, including barcoding, cardboard boxes, pallets, and more.

- High print speed up to 11.8" per second (55 ft per minute)
- Print resolution up to 300 or 600 dpi
- Print width 0.2" to 4.2"
- Mono-color, industrial application with immediate label output
- Compact design thermal transfer label printer

Technical Specifications

Operation

Ink Type	Thermal transfer
Print Resolution	QL-30: 300 dpi QL-60: 600 dpi
Print Speed	QL-30: 1 ips (20 mm/sec) 11.8 ips (300 mm/sec) QL-60: 1 ips (20 mm/sec) 5.9 ips (150 mm/sec)
Print Area	Width: 0.2" (4 mm) – 4.2" (106 mm) Length: 0.1" (3 mm) – 78.7" (2000 mm)
Media Sensors	Gap, Reflective, Continuous
Connectivity	High-Speed USB 2.0; Gigabit Ethernet; RS-232 (1,200 - 230,400 baud) (2) USB host device on rear panel (for keyboard, scanner, USB memory, bluetooth adapter) (1) USB host device on operation panel (for USB memory or service key) 802.11b/g/n WLAN , Digital I/O with 8 in- and outputs
Software	Microsoft® Windows 10, 8, 7; Windows Server® 2012, 2008, 64/32-bit Drivers, CQL Pro advanced label creation and print management software Nicelabel® Enterprise or Desktop Software (optional)

Environmental & Physical

Printer Operating	32° F to 105° F (0° C to 40° C), 10% to 85% Relative Humidity (non-condensing)
Power Requirements	100 - 240 VAC 50/60Hz, 1.5A/0.5A
Dimensions	18.1" L x 9.9" W x 11.3" H (460 mm x 252 mm x 288 mm)
Weight	22 lbs. (10 kg) without supplies
Optional Accessories	Label Rewinder, Label Unwinder, Cutter, Cutter/Stacker, Present Sensor

Supplies

Ribbon Supplies	Each roll 1,476 ft. long (450 m)
Ink Type	Thermal transfer

Labels and Tags

Width	0.2" (4 mm) – 4.3" (110 mm)
Length	0.1" (3 mm) – 78.7" (2,000 mm)
Thickness	2.3 – 28.7 mil (0.06 mm - 0.73 mm)
Roll Size	8.1" OD (205 mm), 1.5" (38 mm) – 3.9" (100 mm) ID
Types	Gloss Paper, Matte Paper and Synthetic pressure-sensitive; Paper Tag Stock

Warranty

One-Year Astronova Product Identification Standard Limited Warranty (excludes wear parts and supplies).



T2-Pro

Digital Label Press



T2-PRO is a digital label press targeted towards high volume industrial and professional printing market. With a high print resolution of 1600 x 1600 dpi and highly durable aqueous pigment inks, its compact footprint makes it an ideal roll-to-roll machine for any size print shops and label converters. It is capable of printing on continuous or pre die-cut media and can handle industrial size label rolls (330 mm wide with 600 mm OD). Setting up is quick and easy; a short media path and long-lasting printheads result in the best total cost of ownership for all aqueous inkjet technologies. A high-capacity data pipeline supports real-time variable data printing to support serialization and customization needs.

- High print speed up to 30 inches per second (46 m/min)
- Superior print resolution 1600 dpi x 1600 dpi
- Print width up to 12.75" (324 mm)
- Large capacity roll sizes (up to 600 mm OD)

Technical Specifications

Operation

Ink Type	High Durability Aqueous Pigment Inks
Print Resolution	1600 x 954 dpi at 30 ips (46 m/min) or 1600 x 1600 dpi at 18 ips (27 m/min)
Print Speed	Up to 30 ips (46 m/min)
Print Area	Max. Print Width: 12.75" (324 mm) Length: 27.95" (710 mm)
Media Sensors	- Combined Gap and Black mark sensor - Web guide media edge sensor - Integrated media cleaning unit
Connectivity	802.3 LAN Ethernet port, Serial Ports I/O
Front End	Digital Front End User Interface with 24" TouchScreen
Software	Two RIP Modes available: - Internal RIP with Astro Application - External RIP (Xitron) with AstroX Application
Additional Features	- Splice table with built-in clamps, laser engraved ruler for easy positioning - Pneumatic core lock spindles with web brakes - Automatic slitters - engage or disengage via user interface - Aerosol extraction system

o

Environment & Physical

Conditions for Operation	59° F to 95° F (15° C to 35° C) at RH 20 to 80% (non-condensing) Recommended: 74° F (23° C)
Conditions for Storage	23° F to 122° F (-5° C to 50° C) at RH up to 85%, non-condensing at 149° F (65° C)
Power Requirements	90-264 VAC - 47-63 Hz 17A /115VAC 10A 230VAC
Air Requirement	6 bar
Dimensions	Height: 55.9" (1420 mm) Width: 59" (1500 mm) Depth (Display flat): 37.4" (950 mm) Depth (Display extended out): 53.9"(1370mm)
Touchscreen	24" touchscreen display
Weight	1450 lbs. (658 kg)

Supplies

Ink Type	High Durability Aqueous Pigment Inks
Label Width	Up to 13" (330 mm)
Thickness	Up to 25 mil (0.025")
Roll Size	Core: 3" (76 mm) Max. OD: 23.6" (600 mm)
Types	Coated Paper/PP/PET Matt - Coated Paper/PP/PET Gloss - Uncoated Paper - Other media types need to be validated

Maintenance

Printhead Maintenance	Wiper motion system (vacuum), microfiber wiper, and user replaceable wiper cartridge
Aerosol Extraction System	Replaceable filters
Web Cleaning	Integrated web cleaner with automatic engage and disengage
Waste Ink	Waste ink tank with Float Sensor



T2-C

Full Capacity Digital Tabletop Press



The first tabletop press designed with the full capacity of a larger press. Utilizing all the capabilities of the T2 Digital Press, the **T2-C** easily fits into any size print department, producing consistent, high-volumes at 24/7 production. Having the option to print pre-die cut blanks or print on continuous material, the **T2-C** is ideal for brand owners, print shops, and smaller label converters looking to add high-resolution color inkjet labels to their portfolio.

- High print speed up to 12" per second (60 ft per minute)
- Superior print resolution up to 1600 dpi
- Print width 2" to 8.72"
- First tabletop press to operate at high-volume capacity and precision of a digital press

Technical Specifications

Operation	
Print Resolution	1600 x 800 dpi or 1600 x 1600 dpi
Print Speed	6 ips (152 mm/sec) or 12 ips (305 mm/sec)
Print Area	Width: 8.72" (221mm) Length without stitching: 0.6" – 30" (15 mm – 762 mm) Length with stitching: Unlimited
Media Sensors	Optical tracking edge sensor, adjustable position. Black mark sensor, gap sensor and continuous
Connectivity	Ethernet 10/100/1000
Driver	Microsoft® Windows 10, 8, 7, Windows Server® 2012, 2008, 64/32-bit drivers
Software	TrojanControl Software, Microsoft Windows® 10, 8, 7; Windows Server® 2012, 2008, 64/32-bit Drivers
Slitting Station	(3) slitter blades included by default, up to (7) slitter blades may be installed and used Slitting not allowed for continuous material Cardboard cores with measuring (label width + edge trim) should be ordered.

Supplies	
Ink Type	High Performance water-based dye ink Four 2-liter tanks CMYK
Label Width	1.9" – 9.8" (50 mm – 250 mm)
Length (Die-cut)	0.6" – 60" (15 mm – 1525 mm)
Thickness	4 pt/mil – 12 pt/mil
Roll Size	Core: 3" (76 mm) Max. OD: 11.8" (299.7 mm)
Types	Paper, Ink jet coated gloss paper, PE, PET, PP

Maintenance	
Maintenance Cartridge	Maintenance tray with replaceable modules (wiper roller/print head cap)
Aerosol Extraction System	Replaceable filters

Environment & Physical

Conditions for Operation	Bewteen 59° F – 86° F (between 15° C – 30° C) at RH 22 to 80% (non-condensing)
Conditions for Storage	Between 41° F – 122° F (5° C – 50° C) at RH up to 85%, non-condensing at 149° F (65° C)
Power Requirements	100-240V AC – 50/60 Hz (360W, 2.5A power supply)
Aerosol Extraction System	Replaceable filters
Dimensions	With 2 Liter external ink tanks: 23.8" L x 22.8" W x 31.3" H (606 mm x 580 mm x 795 mm)
Touchscreen	Touchscreen Display
Weight	132.3 lbs. (60 kg) without supplies

Warranty
One-Year Astronova Product Identification Standard Limited Warranty (excludes wear parts and supplies)



T3-OPX

A Next-Generation, Direct-to-Package Solution



The **T3-OPX** represents a next-generation, direct-to-package printing solution. Offering superior, full-color, wide-format print capabilities at fast speeds, and the ability to print directly on a variety of materials like postcards, boxes, paper bags, wooden planks, or thicker objects like blister envelopes or folded boxes ready for shipment, and more, the **T3-OPX** allows for late-stage customization and packaging and design versatility.

Featuring brilliant automated height calibration and stable, high-quality production, the **T3-OPX** delivers ROI to businesses by easily expanding products and services to attract new and current customers with private labeling or late-stage customization for seasonal or promotional events. Versatile and easy-to-use, it provides a perfect solution for label converters, print shops, manufacturers, contract packaging solutions, and secondary label logistic partners.

- Height print speed up to 18" per second (90 ft/min)
- Superior print resolution up to 1200 dpi
- Print width up to 11.7"
- Automized calibration of print height (up to 100mm)
- Full-color printing (CMYK)

Technical Specifications

Operation	
Ink Type	Pigmented ink, 4 Individual CMYK cartridges
Print Resolution	1200 x 1200 dpi
Print Speed	Up to 18 ips (27 m/min)
Print Width	Up to: 11.7" (297 mm)
Media Sensors	Optical TOF sensor, adjustable position Pressure sensor for height control
Connectivity	802.3 LAN (10/100/1000) Ethernet port
Driver	Windows 10, 8, 7 32/64-bit
User Interface Software	15.6 Touchscreen TrojanControl Software + RIP

Environment & Physical	
Temperature & Humidity	Operation 15° to 30° C (59° to 86° F) Transport -40° to 60° C (-40° to 140° F) Relative humidity 20 to 80% Altitude 0 to 3048 m
Power Requirements	100-240 VAC 50/60Hz, 9A
Print Unit Dimensions	Width: 20.4" (518 mm) Length: 20.3" (516 mm) Height: 11" (290 mm) (excluding height adjustable bracket)
Weight	44 lbs. (20 kg)
Media cleaning unit dimensions	Width: 18" (457.5 mm) Length: 6" (154 mm)
Media cleaning unit weight	10 lbs. (4.5 kg)
Optional Accessories	Conveyor table, automatic feeder, feed table, catch tray, RIP workflow, color management software, artwork designer software for variable data

Supplies	
Ink Type	Pigmented aqueous inks
Ink Cartridge Yield	C: 238 ml M: 233 ml Y: 225 ml K: 498 ml ISO pages: K: 20,000 pages CMY: 16,000 pages
Maintenance	Replaceable service tray
Average drop volume	10 pl K, 8.5 pl CMY

Supplies	
Maintenance	Replaceable service tray
Media	
Types	Uncoated paper, corrugated, paper bags, wood and most other porous ink-receptive packaging
Width	Wide Table: 39.3" (1000 mm)
Length	35.5" (902 mm)
Thickness	0 – 4" (0 – 100 mm) automatic height calibration

Conveyor Tables	
Speed	Up to 18 ips (27 m/min)
Power requirements	100-240V AC – 50/60 Hz (2.5A power supply)
Dimensions Wide MT2	Width: 40.3" (1026 mm) Length: 79" (2007 mm) Height: 35" – 23.2" (890 mm – 590 mm) (5 positions)
Material Width	Wide MT2: 39.4" (1,000 mm)

Warranty	
One-Year Astronova Product Identification Standard Limited Warranty (excludes wear parts and supplies)	



VF280

High-Speed Commercial Vacuum Friction Feeder



Patented Feed Technology

Introducing a game-changing innovation - the **VF280**. Featuring a revolutionary design, this feeder is unique in the market.

Crafted with precision-machined guides and sealed shaft locking collar bearings, every feeder component has been engineered to withstand extensive use. Combined with its powerful vacuum system, this accessory can easily handle a diverse range of products. Designed to meet the rigorous demands of today's commercial environments, it provides seamless job-switching capabilities at high-capacity volume, especially when used in conjunction with the TrojanLabel T3-OPX.

Experience the power and versatility of the **VF280** feeder today.



Suggested Materials

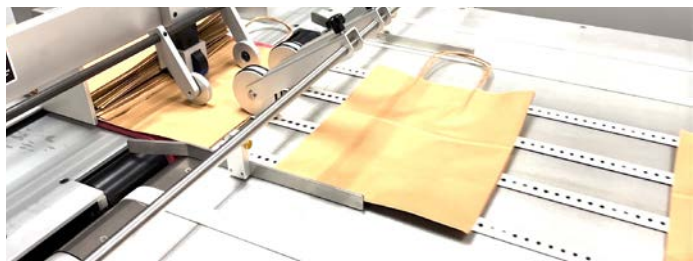
- Paper Bags
- Envelopes
- Heavy Card Stocks
- Perfect Bound Books
- Calendars
- Corrugated Cardboard
- Sheet Stocks



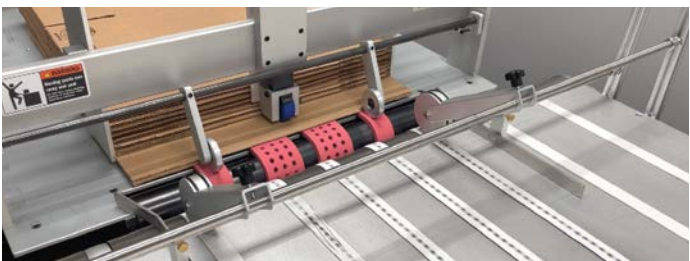
Technical Specifications

Material Size	3"W x 5"L - Max 29"W x 28"L (76mmL x 127mmW – Max 737mmW x 711mmL)
Material Thickness	1" Max (in standard configuration)
Electrical	110/220 VAC, single-phase, 10A circuit
Interlock	Dry Contact (Low Volt) Standard Operator
Controls	Power (on/off), Vacuum (on/off), Stop, Jog, Start, Feed Speed
Physical	24"L x 37.5"W x 33-36"H (610mmL x 952mmW x 838mm - 914mmH)

An optional card kit is available to reduce the minimum media size and an exposure table accessory can extend the feeder's maximum length.



Feeding Paper Bags with Handles



Feeding Large Cardboard Boxes

OEM Solutions

Our History

Did you know AstroNova has half a century of experience delivering custom product solutions for OEMs? In fact, we began as an OEM solution provider in 1969, working with OEMs on their most challenging applications. Since then, AstroNova has grown to provide both end-user solutions as well as custom-designed OEM solutions for high-speed digital printing in a wide range of industries. We have a proven track record as a pioneer with patented technology, focusing on engineering advancements in digital color printing.

Since those early days, AstroNova has accelerated the adoption of new printing and data handling technologies to provide innovative, cutting-edge OEM products for an even more comprehensive range of applications and industries. Today as a global leader in data visualization technologies, AstroNova is recognized as a Tier 1 Supplier to some of the world's leading manufacturers.



Integration of the **T3-OPX**, companies were able to develop a customized conveyor transport system for products like bags, wooden boxes & much more.



Integration of the **T2-C** Print & Apply system combined a smartly designed peel edge with specialized firmware and electronics where each label is presented and picked up by the applicator arm to then apply to the cartons.

The AstroNova Difference

AstroNova teams up with our OEMs to optimize our technologies to best fit their needs developing creative and flexible solutions for high-quality, cost-effective printing. Developing an end-to-end printing solution can be a complex undertaking. AstroNova's team of design, application, and support engineers has decades of experience. They are there through every step of the process to help you make the right decisions, ensuring your success.

- **OEM Focused:** AstroNova's label and direct-to-package printing technologies are developed with the OEM in mind. Options range from compact, self-contained modules to highly customized print and packaging solutions, including automation, custom user/software interfaces, and ease of serviceability.
- **Shared Values:** Sustainability is often at the forefront of business concerns today. With our commitment to sustainable printing solutions, we share your goals. We deliver printing solutions that are environmentally responsible and that are adaptable to global regulations for label and packaging printing.
- **Total Solution Provider:** As a global leader, AstroNova is committed to providing best-in-class customer and technical support to its OEMs throughout system development and beyond. Our one-stop-shop approach minimizes the need to qualify and manage multiple vendors, and our virtual consultations enable us to provide rapid support cost-effectively and efficiently.
- **Innovation:** At AstroNova, we never stop exploring new ways to help your business thrive. We boast a market-leading portfolio of product platforms covering various sizes, print widths, speeds, resolutions, and other technologies that our dedicated engineers continue to enhance.

Integration of the **T3-OPX** print module, the company developed a unique automated clamping device to hold, move, and rotate the stack of books during printing.

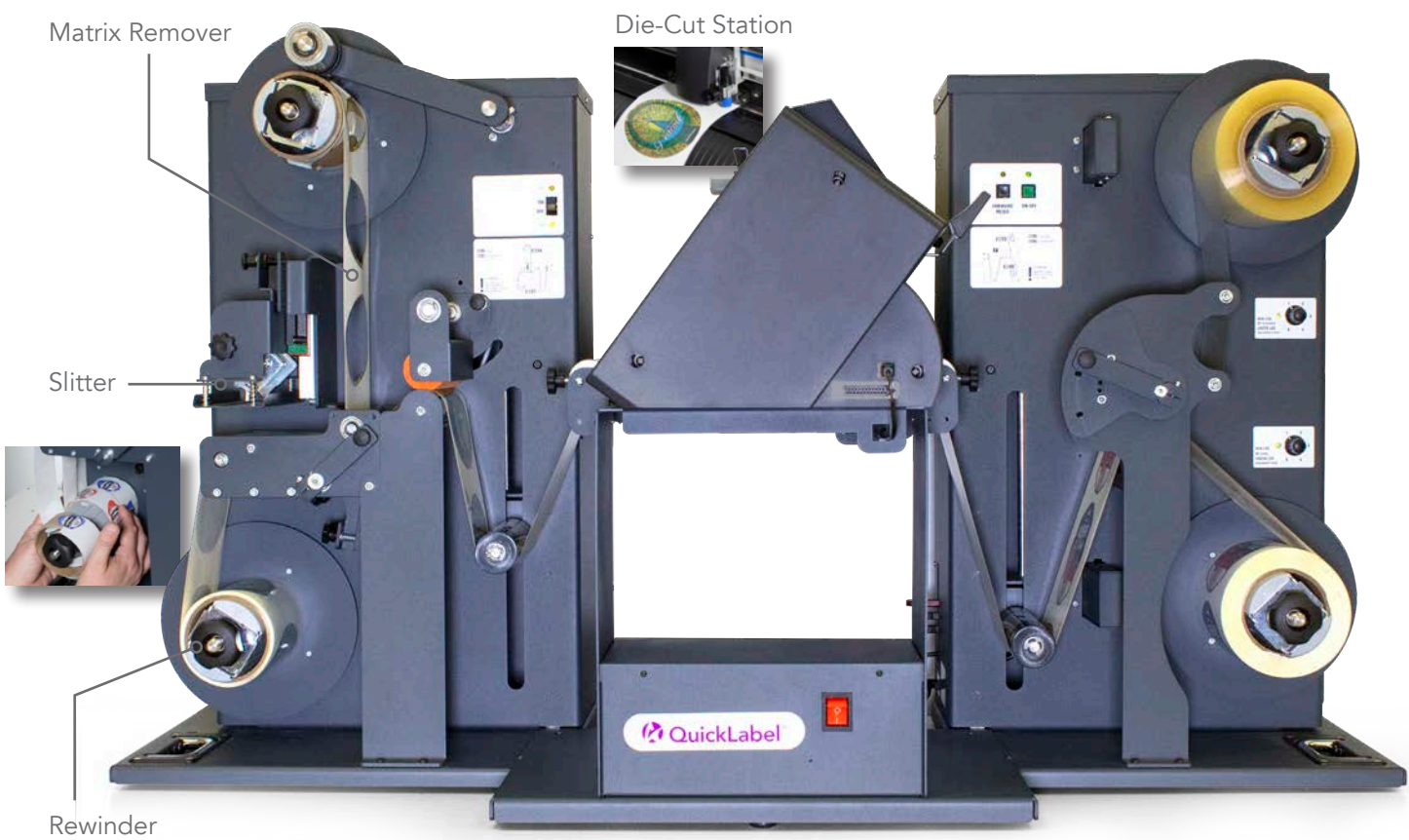


Partner with the Leader

Whether you are an OEM seeking a custom packaging machinery solution or looking to develop a turnkey, in-house label or direct-to-package packaging printing program, AstroNova has the experience and knowledge to ensure your solution delivers results for your business.

LF-100 / LF-200 Label Finisher

All-In-One Laminate & Die-Cut



The **LF-100** and **LF-200** Label Finisher is a professional, compact, all-in-one desktop finishing system featuring die-cutting and lamination of labels in a single pass. The system features a highly accurate, digital die-cutter to produce professional labels of virtually all shapes and sizes, while optionally applying a laminate to give labels a high gloss and durable finish.

The **LF-100** is designed for 5" web width, while the **LF-200** is designed for 8" web width. Either model offers the user full flexibility and limitless variations to produce attractive and durable finished labels, while complementing your digital printing production.



Features

- Optical camera designed to read only one black mark for each cut layout, optimizing cutting speed and synchronization.
- Media path with ultrasonic sensor to ensure precise media tracking and speed, resulting in precise die cuts.
- Inexpensive, multi-edge blades extend cut life and reduce frequency of replacement.
- Compact, tabletop footprint with clear operator access to load/unload media and monitor finishing operation.
- Windows-based cut manager software for importing die lines from Adobe Illustrator or CorelDraw. Interfaces directly with optical camera to ensure precise, repeatable cut jobs.

Technical Specifications

Operation:	LF-100	LF-200
Linear Speed	6.5 ft./min. – 16 ft./min.* (2.0 m/min. - 4.9 m/min.)	
Minimum Slit Width	0.75" (19mm)	
Continuous Mode	Yes	
Roll Diameter	7.87" (200mm)	
Dimensions	46"L x 27"W x 27"H (1,168mm x 686mm x 686mm)	
Power Requirements	100-240VAC, 240W	
Cutting Width	4.8" (122mm)	7.87" (200mm)
Cutting Length	13.77" (350mm)	
Media Width	4.25" - 5.51" (108mm - 140mm)	4.25" - 8.86" (108mm - 225mm)
Laminate Width	Should be 0.25" (6mm) less than total media width	
Slitting Capability	Included, up to 6	Included, up to 8
Weight	220 lbs. (100kg)	440 lbs. (200kg)

**dependent on label size and shape*



Lamination



Matrix remover



Slitter blades

LABEL PRINTING

Accessories

Astronova offers a wide variety of label printing accessories designed to provide the tools you need to create a compact digital label printing center in your office or factory setting.



Label Rewinders

Intelligently control the changing tension as the label rewinds, ensuring a consistent, tightly wound roll that is ready for use on a label applicator. Saving time and reducing waste, our label rewinders roll and apply your finished labels without wrinkling or tearing.

External Label Unwinder

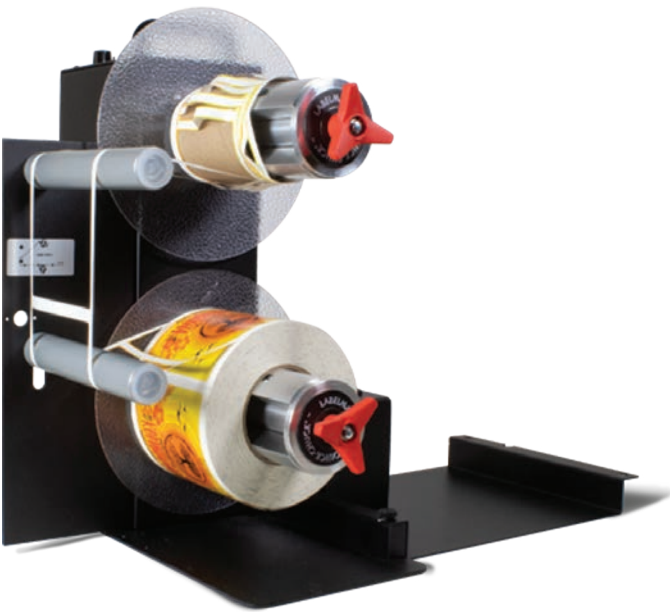
This external device sits behind the label printer, modulating the rate at which the printer takes labels from a much larger label supply, eliminating the need to load your own large capacity of labels and ensuring proper label alignment.

External Control Module

The External Control Module is used to synchronize label printing with your label application process. Providing the functionality necessary to fill the space between the applicator and external device, this module allows you to print a single label, multiple labels or an entire print job at once. Easily integrated with label applicators or other TTL signal interface equipment, our external control module eliminates the need for costly control system programming.



The external control module interfaces with the QL-120

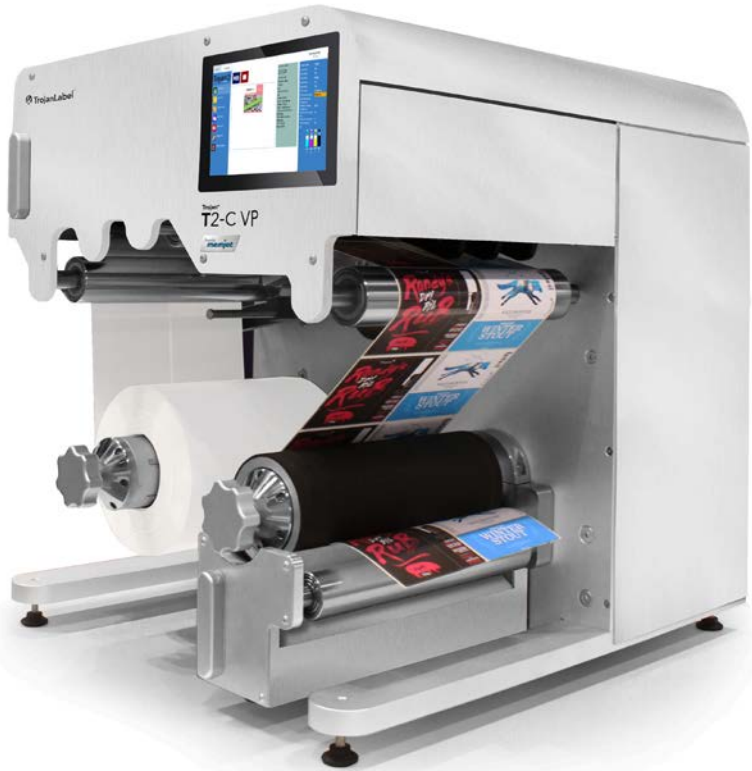


MR-301
Label Matrix Removal and Rewinder System
This system designed specifically for use with the QL-300 color label printer removes excess label matrix and rewinds finished labels into a neat roll to be loaded onto a label applicator or dispenser. It may also be used as a rewinder only without matrix removal.



RW-300
Label Rewinder
This label rewinder is designed specifically for the QL-300 color label printer with compatibility features such as optimized self-regulating rewind torque. Save time, reduce waste and prevent wrinkling or tearing on your premium labels up to 6.7" in width.

T2-C Exit Roller
The T2-C Exit Roller option allows the T2-C printed output to be fed directly into in-line packaging equipment such as a label finisher or label applicator, seamlessly integrating your labeling workflow. Exit Roller operation is easily activated from the built-in TrojanControl interface, or from an external device through its I/O port, offering you ultimate flexibility in post-print label processing.



ASTRONOVA PRODUCT SUPPORT OVERVIEW

AstroNova Product Identification offers a full range of product support services to ensure the success of your in-house labeling and packaging printing needs.

Our goal is not only to provide high-performance in-house labeling and printing solutions but to ensure you have all the knowledge and tools to bring your products to life with vibrant, colorful branding and differentiation. Our direct Technical Support specialists are rigorously trained with extensive, up-to-date knowledge of all products and services, and stand ready to assist worldwide through our remote and local support systems.

AstroNova offers several Support Products which provide benefits and overall peace of mind, maximize uptime, and ensure you extract the highest performance out of your printing system.



Extended Warranty Package

The Extended Warranty Package provides an additional year of financial and operational peace of mind, covering the cost of labor and replacement parts whether your machine is serviced on-site or at our repair depots, ensuring maximum uptime and productivity for your business.

Ideal for a business where the total cost of ownership and containment of service costs are critical.

* Support Products include: Installation and Training, Extended Warranty Package, Customer Support Package and Preventative Maintenance Package

Preventative Maintenance Package (PMP)

The Preventative Maintenance Package provides a priority response and an annual visit to keep your printer operating at its best. The PMP is ideal for businesses who prefer to leave maintenance to the experts and ensures optimal performance throughout the life of the printer.

Additional periodic maintenance visits can be added to this package.

Customer Support Package (CSP)

The Customer Support Package delivers a priority response to on-site service by an AstroNova specialist as well as a loaner printer if a repair cannot be made on-site. Additionally, we provide software guidance and support, as well as any major upgrades that would otherwise be chargeable. The CSP can be purchased with a new printer purchase at a discount since the Standard Limited Warranty provides repair benefits in the first year. The CSP is renewable beyond first year of ownership, and can be combined with an Extended Warranty, providing the ultimate protection of your investment.

The CSP is ideal for mission-critical compliance labeling or packaging applications where your business cannot suffer from production or shipping delays.

LABEL TERMINOLOGY

BS5609

The British Standard for pressure-sensitive adhesive labels used for marine applications

Continuous Material

A process where materials are processed in a continuous flow

Cover Up Label

Used to cover up an existing logo or artwork on a product that's already been labeled. It usually has a black tint, or a black barrier effectively preventing what's underneath from being visible.

Die Cut Material

The process of using a die, a manufactured and specialized piece of metal, to cut a specific shape out of a material

Edge Trim

A small liner only margin located on the edge of the label that is designed to reduce adhesive migration into the printer

Facestock

Any paper or material that can be converted and used to produce the top layer of basic label construction

FDA 175.105

FDA governance ensuring articles intended for use in packaging, transporting, or holding food, are in accordance with regulation

Gap Mark

A type of TOF (top of form) mark that consists of an exposed liner between each label

TYPES OF INK

Dye Inks

The standard ink type used in inkjet printers, dye-based inks absorb into the paper, bind to it and dry quickly

Pigment Inks

Consisting of a fine powder of solid colorant particles, pigment is vibrant in intensity and slower-drying as the ink sits on top of the paper

Toner

Consisting of a dry, powdery substance, toner is a special ink used by copy machines and laser printers

TTR

Works with heat to transfer color pigments from the thermal-transfer ribbon onto a substrate

GHS Label

A Globally Harmonized System of classification and labeling of chemicals

Inkjet Coating

A coating to ensure substrates are print ready

Liner

Also known as a backing or "release liner", carries that die-cut labels to the applicator and releases the adhesive-backed label onto the product

Matrix in Material

A type of media construction that's used with certain printers when edge-to-edge boarderless printing is needed. This particular construction consists of extra border material margin around the die cut label, allowing for over printing on the edges of the label

Moisture-Resistance

The ability of a material to resist absorbing moisture from the air or when immersed in water

PP Label

Short for polypropylene, refers to the material from which these labels are made. These are more durable than most and are both tear-proof and waterproof

Reflective Queue Mark

A type of TOF (top of form) mark, a preprinted black bar that's usually printed on the underside of the liner material

Solvent Exposure

Occurs when a chemical, material, or person comes into contact with a solvent

TOF

Also referred to as, top of form, indicates the start of a label

UV Stability

Materials lacking UV stability can crack or disintegrate due to ultraviolet radiation

Water-Based Dye

An ink type used in inkjet printers where the dye colorant is fully dissolved in water, unlike pigment ink where the particles are suspended in liquid

Water & Abrasion Resistance

The ability of the material to withstand any method of wearing down or rubbing away by means of friction or exposure to moisture

WORLD HEADQUARTERS

AstroNova, Inc.
600 East Greenwich Avenue
West Warwick, Rhode Island 02893 USA
Tel: +1 401-828-4000
Toll-Free: 877-757-7978 (US Only)
info@astronovaproductid.com

EMEA HEADQUARTERS

AstroNova GmbH
Waldstraße 70
D-63128 Dietzenbach Germany
Tel: +49 (0) 6074 31025-00
info@astronovainc.com

CANADA

Tel: +1 450-619-9973
Tel: 800-565-2216 (Canada Only)
infoCA@astronovaproductid.com

LATIN AMERICA

Tel: +52-(55)-3934-5171
infoMX@astronovaproductid.com

FRANCE

Tél: +33 (0)1 34 82 09 00
infoFR@eu.astronovainc.com

UNITED KINGDOM & IRELAND

Tel. +44 (0)1628 668836
infoUK@eu.astronovainc.com

DENMARK

Tel. +49 0 6074 31025 00
info@astronovainc.com

CHINA

Tel: +86-21-5868-1533
infoCN@astronovaproductid.com

MALAYSIA

Tel: +603 5031 9330
infoMY@astronovaproductid.com



www.astronovaproductid.com