

Best Label Materials for Inkjet Printing

The Labels You Want When You Need Them®

Digital Inkjet printing is the fastest growing technology in the printing world today. That should be no surprise given the advantages inkjet printing offers compared to conventional digital print systems, including ease of use, short turnaround time, on-demand printing, vibrant colors, and high-resolution photographic output quality. Why settle for material that's not suited for your inkjet printer?

After years of developing and manufacturing durable inkjet materials, GetLabels offers the perfect solution for your application, compatible with all major printer brands - here are the top 10 materials found to work best for your inkjet printing needs.

 **AstroNova®**

 QuickLabel®  GetLabels®  TrojanLabel®

Label Materials, Markets & Inks Key

X - Top Industry Choice

S - Second Industry Choice

Adhesive Type

H - Hotmelt

HH - Heavy Coat Weight Hotmelt

E - Emulsion Acrylic

U - UV- Cured Acrylic

S - Solvent Acrylic

Types of Ink

Dye Inks

The standard ink type used in inkjet printers, dye-based inks absorb into the paper, bind to it and dry quickly.

Pigment Inks

Consisting of a fine powder of solid colorant particles, pigment is vibrant in intensity and slower-drying as the ink sits on top of the paper.

Toner

Consisting of a dry, powdery substance, toner is a special ink used by copy machines and laser printers.

Thermal Transfer Ribbon

Works with heat to transfer color pigments from the thermal-transfer ribbon onto a substrate.



WINE & SPIRITS



COSMETICS, HEALTH & BEAUTY



SPECIALTY FOODS



E-JUICE & ESSENTIAL OILS



REFRIGERATED & FROZEN FOODS



GHS DRUM



BOTTLED FOODS & DRINKS



GENERAL PURPOSE



BIOMEDICAL & PHARMACEUTICAL



HARDWARE



CHEMICAL & SOLVENTS



APPAREL

#1

PAPER LABELS

Looking for a reliable, tried, and trusted solution? Paper labels have you covered.



USA: 242 EMEA: 171	x	x	S	S	S	Dye Pigment	H
-----------------------	---	---	---	---	---	----------------	---

Matte Paper

Uniquely receptive to water-based dye and pigment inks, this matte white paper label provides a premium matte appearance for primary display and secondary packaging labels.



USA: 112 EMEA: 171	x	x	S	S	Dye Pigment	E
-----------------------	---	---	---	---	----------------	---

Premium Matte Paper

This matte white paper label resists smudging, abrasion, and incidental moisture contact, providing a premium matte appearance on labels featuring photographic or other color images.



USA: 111 EMEA: 250	x	x	Dye	E & F
-----------------------	---	---	-----	-------

Semi-Gloss Paper

An economic semi-gloss white paper label uniquely receptive to inkjet label printing designed to provide excellent print quality with superior moisture and smudge resistance.



USA: 160/162 EMEA: 141/194	x	x	x	S	S	S	Toner Ink Set	E & F
-------------------------------	---	---	---	---	---	---	------------------	-------

High Gloss Paper

With a general-purpose permanent adhesive designed for excellent adhesion to corrugated board, plastics, and packaging films, this high-gloss white paper label provides a premium shine desired for primary display labels featuring photographic images.



Best Label Materials for Inkjet Printing





COVER-UP LABELS

Material that adheres to previously printed labels can save you time, money, and headaches.

#2



USA: 166 EMEA: 195	x	x	S	S	S	Dye	E
-----------------------	---	---	---	---	---	-----	---

High Gloss Cover-Up Paper with Tinted Adhesive

A white, glossy paper label ideal for printing full-color, photographic images on primary display labels that cover other labels or printed surfaces beneath and adheres well to a wide variety of substrates.



USA: 169 EMEA: 169	x	x	x	S	Dye	E
-----------------------	---	---	---	---	-----	---

High Gloss Paper Removable

Providing durability and ideal for printing photographic images on primary display labels that must resist moisture, this white paper label with a gloss finish contains a removable, solvent-free adhesive.

#3

WINE LABELS

Inkjet printing technology requires a special receiver coating for images to look vibrant, for your product label to appear world-class, and withstand moisture. Help your product stand out and effectively convey your brand & image with these materials.



USA: 237	x	S	S	Pigment	E
----------	---	---	---	---------	---

Matte White Wine Label

For applications requiring a textured, eggshell-like appearance, this classic Crest® Solar White Felt, is ultra-white, wet strength, inkjet top-coated paper explicitly designed for water-based inkjet printing.



USA: 223	x	S	S	Pigment	E
----------	---	---	---	---------	---

Matte Vellum Wine Label

Combining premium matte appearance with excellent color matching, moisture-resistance, and wet strength, this matte off-white paper label with a vellum finish is perfectly designed for wine and beverage applications that require high image quality.



CARD STOCK

Our customers have found superior print quality and durability with our available card stock options.

#4



USA: 218	x	x	S	Dye
----------	---	---	---	-----

Gloss Card Stock 8 pt.

High gloss 8 pt. paper cardstock that is highly receptive to dye-based inks and offers exceptional print quality ideal for the apparel industry.



USA: 244	x	x	Dye
----------	---	---	-----

Gloss Card Stock 10 pt.

Cast gloss-coated paper tag stock receptive to water-based dye ink. FSC certified and ideal for high-quality printing applications where sharp contrast and brilliant colors are needed.



#5

MATTE POLYPROPYLENE LABELS

These materials offer special constructions and matte finishes resistant to smudging with dry edges.



USA: 248 EMEA: 213	x	Dye Pigment	H
-----------------------	---	----------------	---

Matte Polypropylene Tire Label

Matte poly material with a highly aggressive adhesive explicitly designed to adhere to tires. Special construction engineered to eliminate adhesive migration. Offers medium airborne contaminate resistance.



USA: 233/258	x	x	x	x	x		Dye Pigment	H & E
--------------	---	---	---	---	---	--	----------------	-------

Matte Polypropylene

Economy-grade matte white polypropylene label receptive to pigment inks combines premium matte appearance and great color matching with high solvent-resistance, moisture-resistance, and strength. A virtually smudge-proof material, ideal for primary display and secondary packaging labels featuring photographic and other color images.

Best Label Materials for Inkjet Printing



#6

SATIN & GLOSSY POLYPROPYLENE LABELS

More durable than most labels, these are tear-proof and waterproof and resistant to fading and discoloration that is often characteristic of standard paper labels.



USA: 269	x	S	Dye	H
----------	---	---	-----	---

Gloss Polypropylene Freezer

Durable, resistant to moisture and some solvents, this white polypropylene label with freezer-grade adhesive and high-gloss finish is uniquely receptive to inkjet label printing making it ideal for printing photographic images on primary display labels.



USA: 200 EMEA: 191	x	S	S	Dye	E
-----------------------	---	---	---	-----	---

Gloss Polypropylene Removable

White polypropylene label with high-gloss finish receptive to inkjet label printing. This material provides durability, is resistant to moisture and some solvents, and is a removable adhesive.



USA: 198 EMEA: 163	x	x	S	S	Dye	E
-----------------------	---	---	---	---	-----	---

Satin Polypropylene

A white polypropylene label with a satin finish receptive to inkjet label printing. Provides durability ideal for printing photographic images on primary display labels that must resist moisture and solvent exposure. Adheres to a wide variety of substrates, including cardboard.



USA: 172/216/269 EMEA: 165	x	x	x	x	x	x	x	x	S	Dye Pigment	H & E
-------------------------------	---	---	---	---	---	---	---	---	---	----------------	-------

Gloss Polypropylene

A white polypropylene label with a high gloss finish that's receptive to inkjet label printing, providing durability and is ultimately ideal for printing photographic images on primary display labels which must resist moisture and some solvents. Heavy coat weight and highly aggressive adhesive that will require additional and more frequent printer cleanings.



#7

GLOSSY PET

(polyethylene terephthalate) Labels

Strong, excellent print quality, chemical, and temperature resistant with a glossy, eye-catching appearance.



USA: 208
EMEA: 208

x

S

Dye

H

Gloss PET Tire Label

Specially engineered for exceptional adherence to rough surfaces such as tires, cardboard, wood, among others, this gloss white PET label is intended for dye-based inkjet printers.



USA: 207
EMEA: 207

x

x

x

x

x

S

S

S

Dye
Pigment

U

Premium High Gloss PET

A durable gloss white PET label uniquely receptive to inkjet label printing, including UV-cured waterproof adhesive, and ideal for photographic images used in primary displays and anywhere high-temperature and high-moisture resistance is required.



USA: 245

x

x

x

x

x

S

S

S

Dye

E

High Gloss PET

Receptive to both water-based dye and pigment inkjet ink, this gloss-white PET material is excellent for printing high-quality prime packaging labels where a bright white look is desired.

#8

SILVER & METALLIZED PET LABELS

Need a material that's extremely durable, yet stands out on shelves? You don't need to sacrifice one for the other with this label material.



USA: 259
EMEA: 201

x

S

S

S

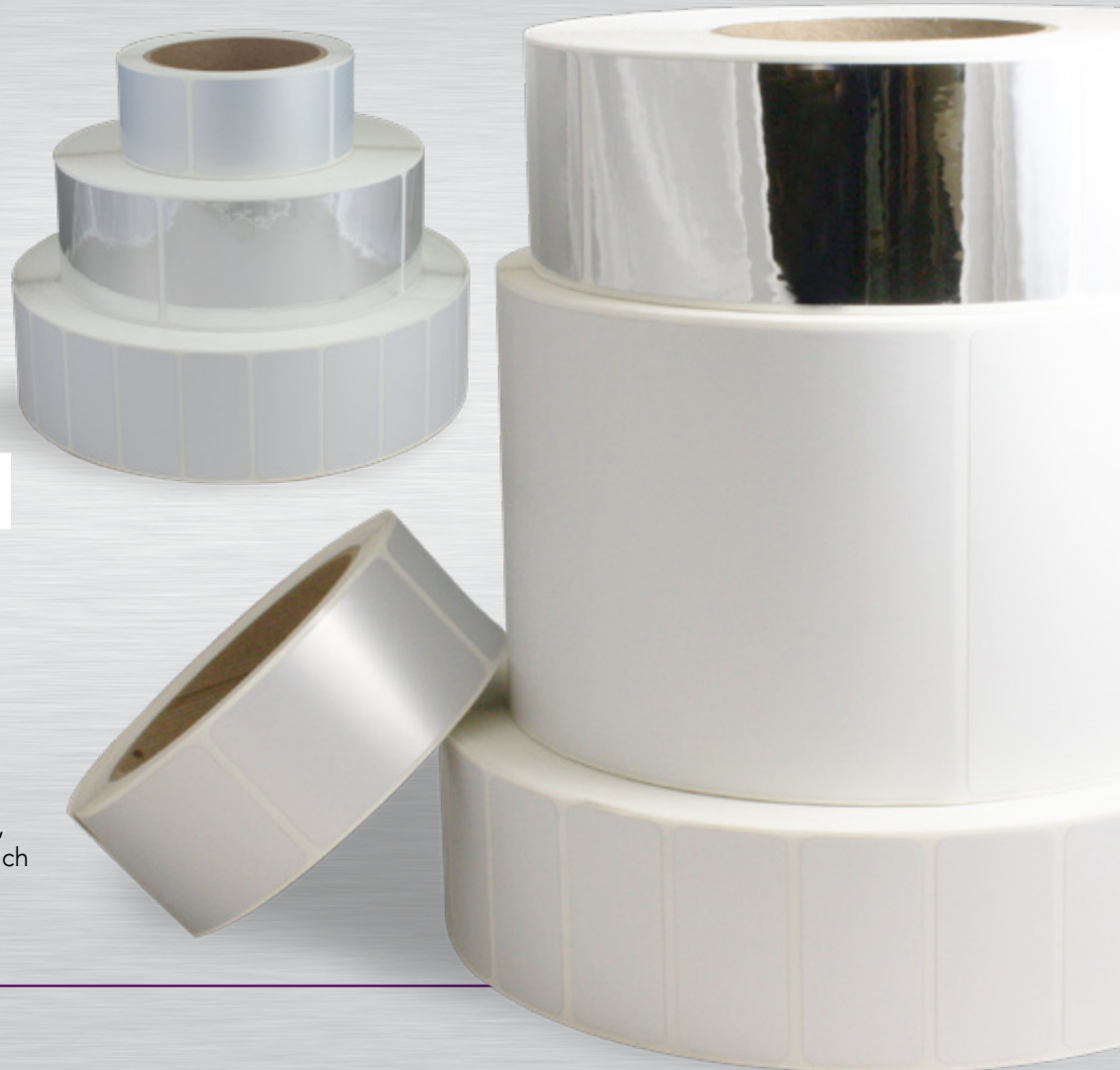
S

Dye

H

Metallized PET

Extreme high gloss, metallized polyester label material with permanent emulsion acrylic freezer adhesive. Receptive to both dye and pigment inkjet inks. Designed for use in specialty food packaging as well as on any products where eye-catching, mirror-like reflectivity is desired. To eliminate the residual tackiness of the inkjet receptive coating, the use of AstroNova's RRCL thermal transfer ribbon overlamine is recommended, unless it is printed on using EP / Dry Toner technology in which case tackiness is eliminated in all toner-covered areas.



BS5609 & CRYOGENIC COMPLIANT LABELS

GetLabels offers pressure-sensitive, adhesive-coated labels for marine use, offering durability to even the harshest labeling demands.



USA: 183 EMEA: 183	x	x	S	S	Pigment	E
-----------------------	---	---	---	---	---------	---

Matte White Kimdura

Compliant with BS5609 section 3, this matte white kimdura facestock is ideal for labels that must survive harsh environments like exposures to chemical solvents, UV light, moisture, and abrasion.



USA: 236	x	x	S	Pigment	S
----------	---	---	---	---------	---

Matte Polypropylene Cryogenic

Matte white polypropylene receptive to water-based pigment inks with a combination of premium matte appearance and great color matching, making it highly solvent-resistant, moisture-resistant, and durable. Capable of withstanding harsh environments, it's virtually smudge-proof and ideal for pharmaceutical applications.



#9

TRANSPARENT, GLOSSY POLYPROPYLENE LABELS

Used in a wide variety of labeling applications, these materials offer superior performance.

#10



USA: 164
EMEA: 164

x

x

x

x

Dye

E

Clear Polypropylene

This transparent, glossy polypropylene label is uniquely receptive to inkjet label printing and provides durability for printing photographic images on primary display labels which must be resistant to moisture and solvent exposure. This material adheres well to a wide variety of substrates, including glass and metals.



USA: 190

x

x

x

x

Dye

E

Clear PET

A transparent, glossy PET label receptive to inkjet label printing providing durability, making it ideal for printing photographic images on primary display labels that must resist moisture and exposure to solvents. Adhesive is UV-stable and heat resistant.



USA: 238

x

x

x

x

Dye

E

Clear Polypropylene

A transparent, glossy Polypropylene material receptive to both dye and pigment inkjet inks. Ideal for prime labeling applications that require water and chemical resistance.

AstroNova Understands Your Application

Today, thousands of manufacturers, processors, and retailers worldwide increase their sales revenue and profit margins by labeling in-house. With over 50 years of innovation and expertise, let AstroNova help your business grow in this expanding market and stay ahead of regulation changes by taking control of your labeling today!

Contact us:
Tel: +1 401-828-4000
Toll-Free: 877-757-7978 (US Only)
sales@astronovaproductid.com



www.astronovaproductid.com

www.getlabels.com

WORLD HEADQUARTERS

AstroNova, Inc.
600 East Greenwich Avenue
West Warwick, Rhode Island 02893 USA
Tel: +1 401-828-4000
Toll-Free: 877-757-7978 (US Only)
sales@astronovaproductid.com

EMEA HEADQUARTERS

AstroNova GmbH
Waldstraße 70
D-63128 Dietzenbach Germany
Tel: +49 (0) 6074 31025-00
infogmbh@astronovainc.com

CANADA

Tel: +1 450-619-9973
Tel: 800-565-2216 (Canada Only)
info@quicklabel.ca

LATIN AMERICA

Tel: +52-(55)-3934-5171
sales@astronovaproductid.com

FRANCE

Tél: +33 (0)1 34 82 09 00
info@quicklabel.fr

UNITED KINGDOM & IRELAND

Tel. +44 (0)1628 668836
info@quicklabel.co.uk

DENMARK

Tel. +49 0 6074 31025 00
infogmbh@astronovainc.com

CHINA

Tel: +86-21-5868-1533
sales@astronovaproductid.com

MALAYSIA

+603 5031 9330
sales@astronovaproductid.com



 QuickLabel®  GetLabels®  TrojanLabel®